



Comments from our Parents...

"I think the school is absolutely amazing, the staff-teachers, support staff, admin everyone is fabulous. I recommend the Centre every chance I get, to friends and clients"

"I love the program it has been wonderful"

"The program is simply fantastic. My child has learned so much, is eager to go to school and she is in the best care"

"I think the centre is wonderful. I have not come across another centre with more caring and attentive staff"



The Oakville Parent-Child Centre is a place where...

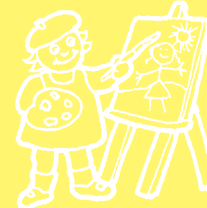
Parents can:

- Develop friendships
- Ask questions and learn more
- Share ideas and build confidence



Children can:

- Develop friendships
- Explore creativity
- Learn about their world



The Centre provides a wide selection of programs and services for parents, caregivers and their children.



Registered Charitable Organization #107-790-693



Offered at 4 locations:

- **461 North Service Rd. W. Unit 17**
Between Fourth Line and Dorval Drive
- **1500 Sixth Line**
South of Upper Middle Road
- **2828 Kingsway Drive**
Ford Drive, South of QEW
- **74 Florence Drive**
Off Kerr Street, South of Speers Road

Discovery Station Nursery School Offers:

We Offer:

- Programs for toddlers (18 –30 months)
- Programs for pre-schoolers (2½ to 5 years)
- Specialized senior program (3½ to 5 years)
- Activities that will enhance your child's natural curiosity and love of knowledge
- Weekly themes that include the environment, the earth, animals, community helpers and other interesting topics
- Staff who will meet the creative, intellectual, social and physical needs of your child
- Progress reports prepared for preschool groups which provide an overview of your child's development
- An opportunity for parent visits in your child's preschool classroom

This program is licensed under the Day Nurseries Act. Each location is inspected annually by the Ministry of Community & Social Services. The Day Nurseries Act contains requirements specific to staff qualifications and ratios, program content and equipment.

Just Playing

When you ask me what I've done today, and I say, "I just played", please don't misunderstand me. For, you see, I'm learning as I play. I'm learning to enjoy and be successful in my work. I'm preparing for tomorrow. Today I'm a child and my work is play.

By Anita Wadley

Gateways to Learning, Edmond, Oklahoma

- Low child-teacher ratios
- Special needs/integrated resource consultation provided by Halton Region
- 2, 3 & 5 half-day programs:
Mornings 9:00 – 11:30 a.m.
Afternoons 1:30 – 4:00 p.m.
- A summer nursery school program for children 18 months - 5 years.

For more information about registering and space availability, please call (905) 849-6366. or visit our website www.op-cc.ca



Choosing Quality Childcare

Reasons for Considering a Licensed Childcare or Nursery School Program:

- Offers your family a supportive learning environment
- Expands and enriches your child's life
- Provides interactions with other children in group activities to build healthy relationships
- Access to community resources and services

Quality Childcare:

- Understands and supports the growth of children which allows them to play and explore
- Provides secure positive experiences that will help children gain confidence and competency
- Provides activities that are suited to your child's stage of growth and help them develop mentally, physically, socially and emotionally
- Offers an inclusive program for children with various abilities and needs